

Projecto 2017
Realização 2018 - 2019

Reabilitação de Edifício na Rua Cimo de Muro nº18

Porto

Arquitectura: André Eduardo Tavares
Colaboração: Arq. Maria Inês Pimentel, Arq. Miguel Trigo
Dono de Obra: DomusSocial, S.A
Localização: Porto
Data de Projecto: 2017
Realização: 2018-2019
Projectos de Especialidades: ASL e Associados
Fotografia: Arménio Teixeira

Todos os Direitos Reservados © André Tavares Arquitecto 2020





1



2

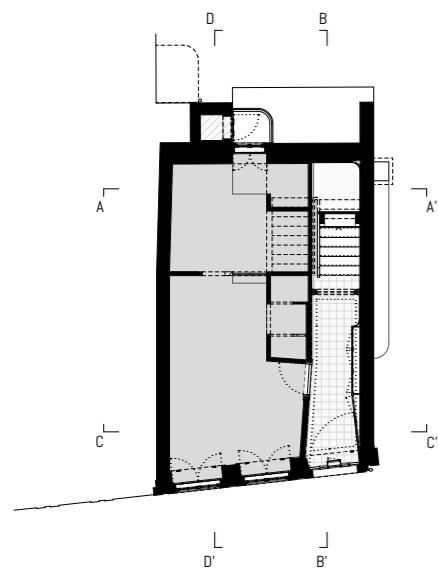


3

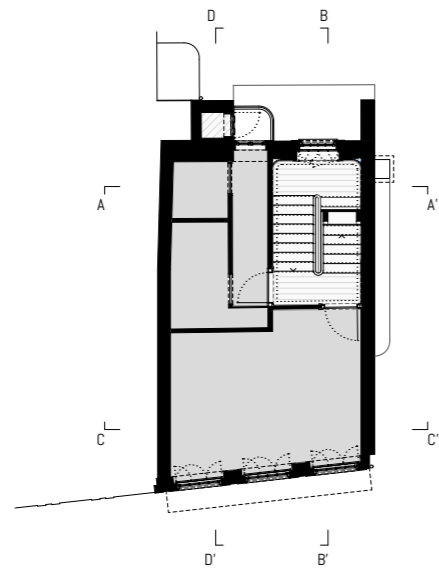


- 1 Implantação
- 2 Vista do Existente
- 3 Vista Exterior
- 4 Vista Exterior
- 5 Vista Exterior

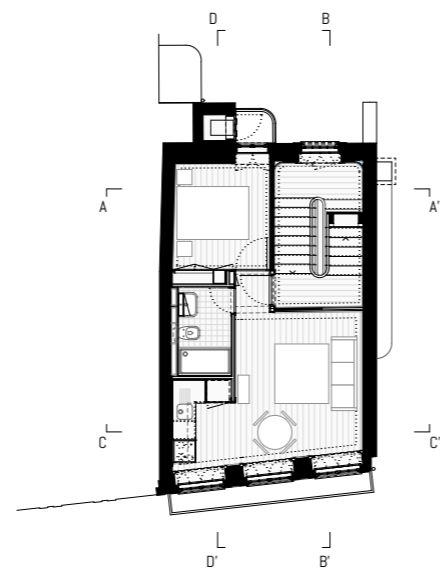




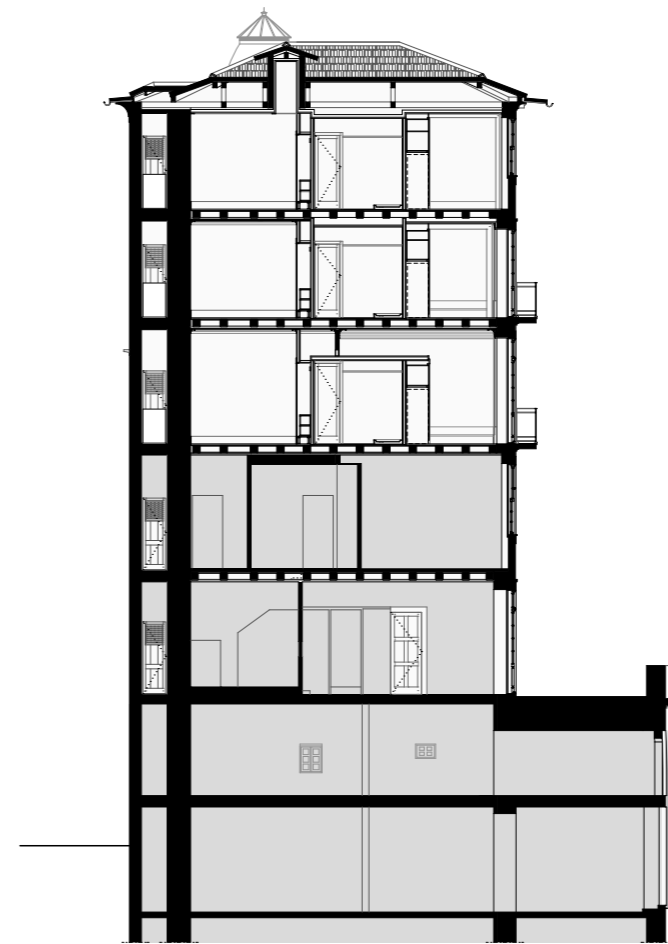
Planta do Piso 0



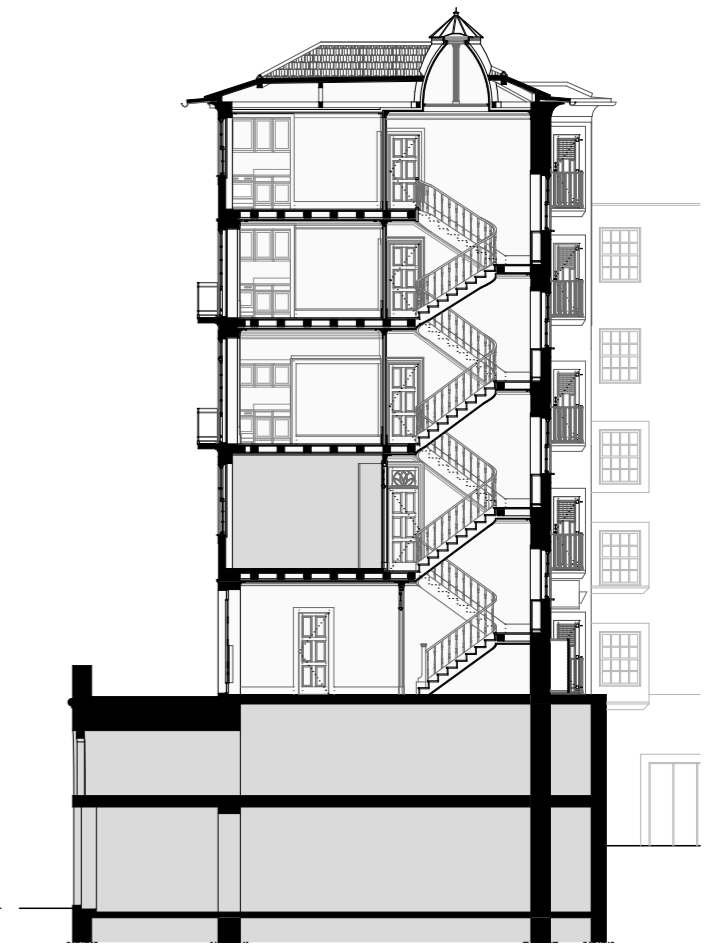
Planta do Piso 1



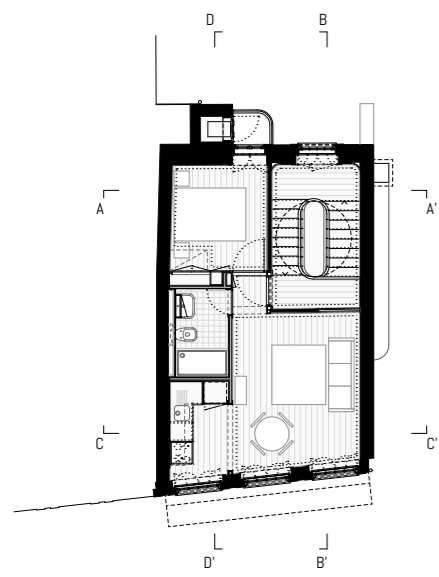
Planta do Piso 2



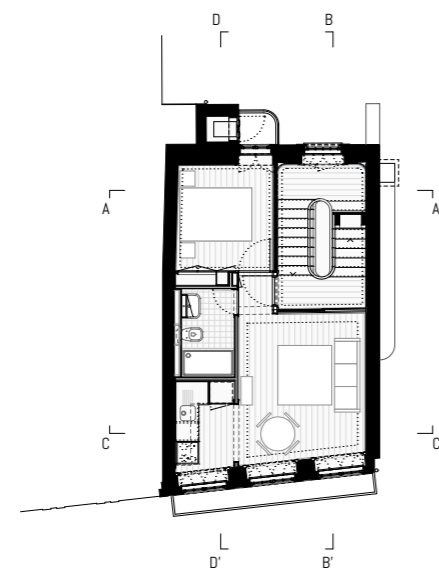
Corte DD'



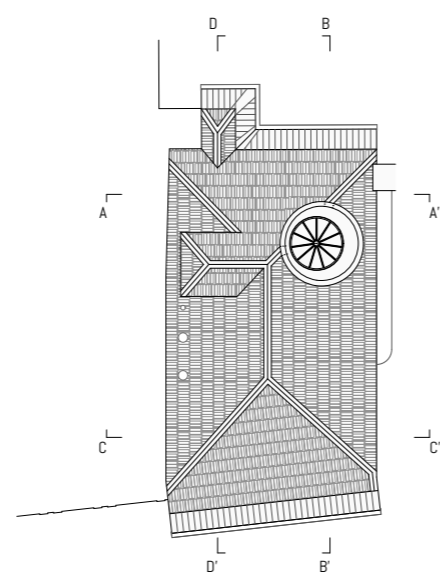
Corte BB'



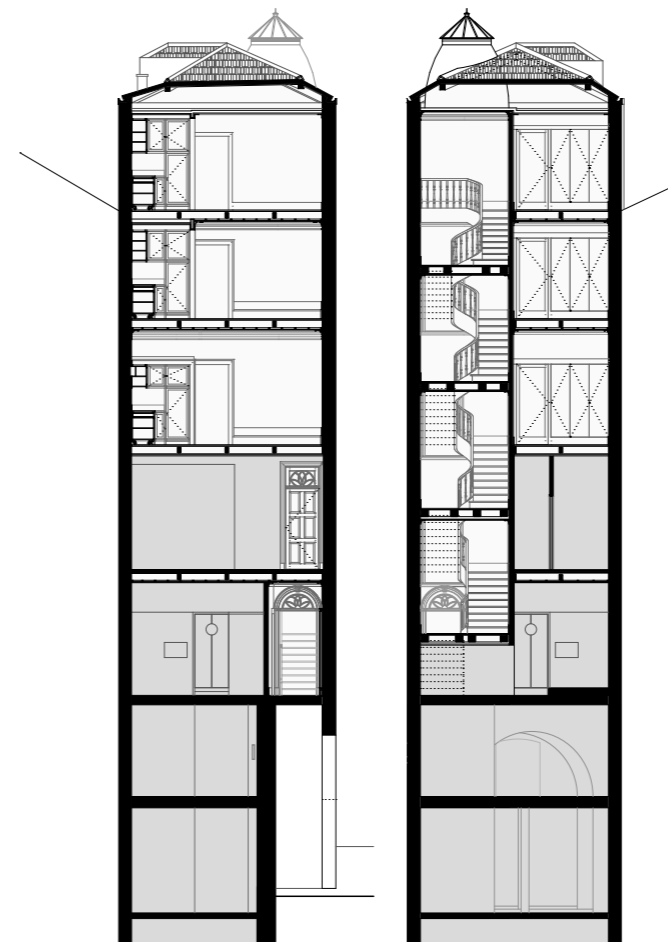
Planta do Piso 3



Planta do Piso 4



Planta de Cobertura



Corte CC'

Corte AA'



Alçado Frontal

0 1 5m







7



8



9



10



12



11



13

- 6 Vista Interior Geral
- 7 Vista Interior Piso 4
- 8 Vista Interior Piso 3
- 9 Vista Interior Piso 2
- 10 Vista Interior Escadas
- 11 Vista Interior WC
- 12 Vista Interior Sala
- 13 Vista Interior Escadas