

Projecto 2016  
Realização 2019 - 2020

---

## Reabilitação de Edifícios na Rua Infante D. Henrique, nº103 e 107

---

Porto

**Arquitectura:** André Eduardo Tavares  
**Colaboração:** Arq. Maria Inês Pimentel, Arq. Miguel Trigo  
**Dono de Obra:** DomusSocial, S.A  
**Localização:** Porto  
**Data de Projecto:** 2016  
**Realização:** 2019-2020  
**Projectos de Especialidades:** ASL e Associados  
**Fotografia:** Arménio Teixeira







- 1 Implantação
- 2 Vista do Existente
- 3 Vista do Existente
- 4 Vista Exterior
- 5 Vista Exterior

1



2



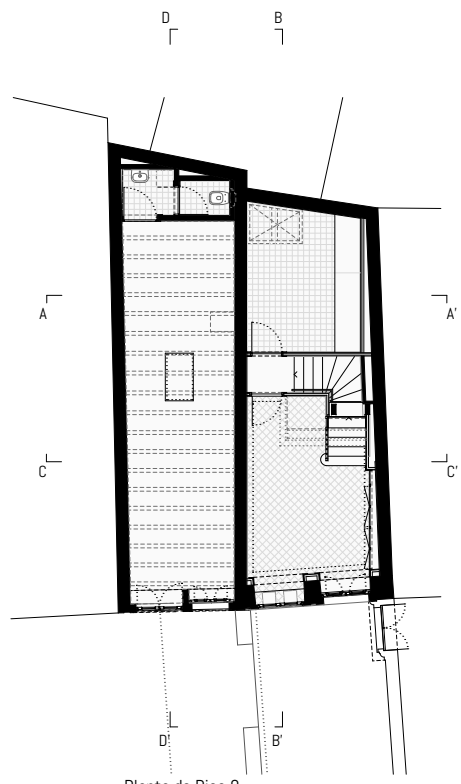
3



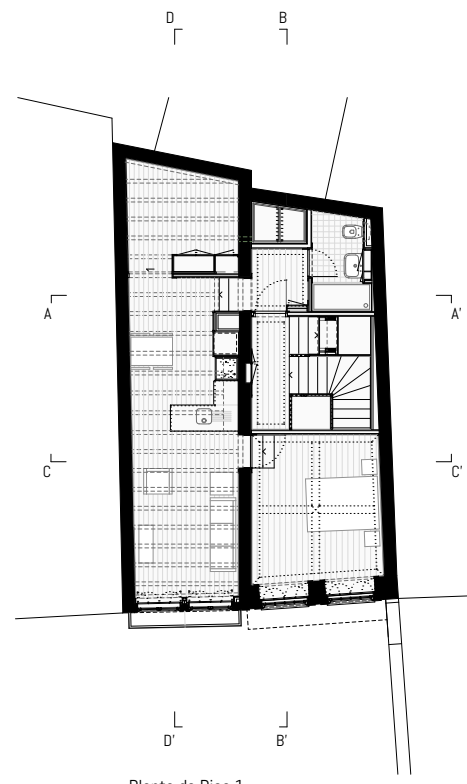




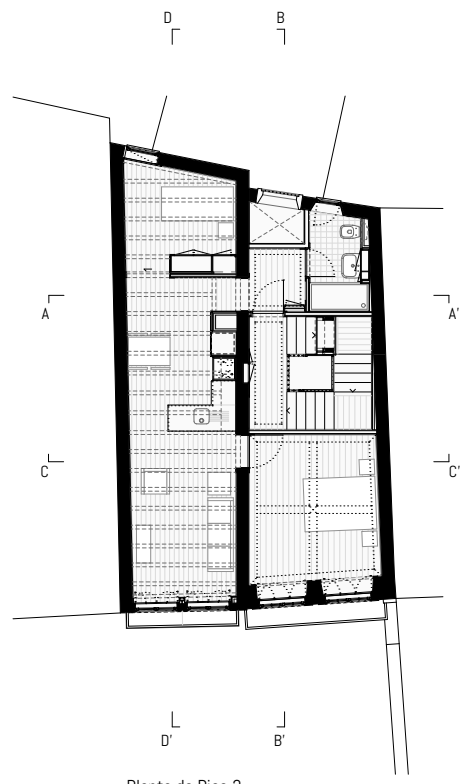




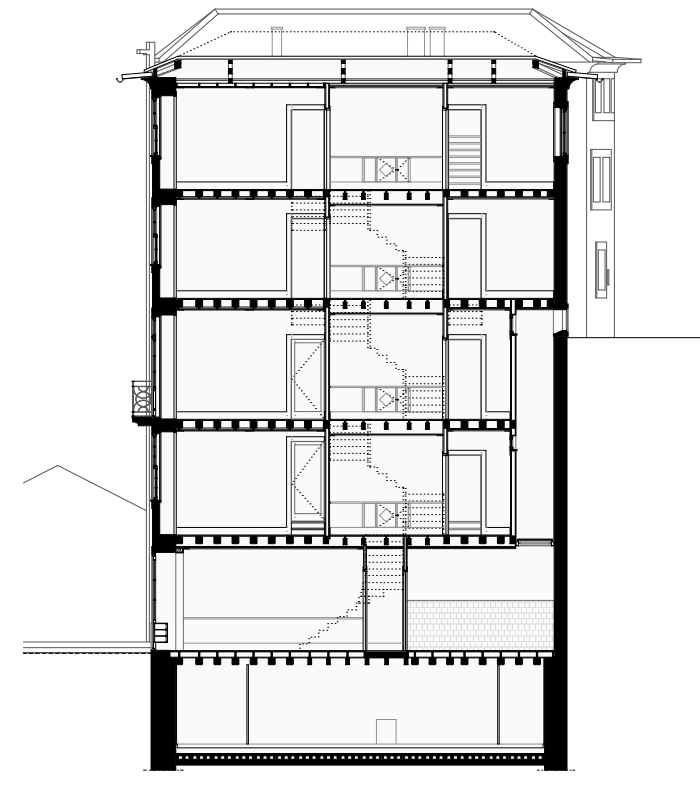
Planta do Piso 0



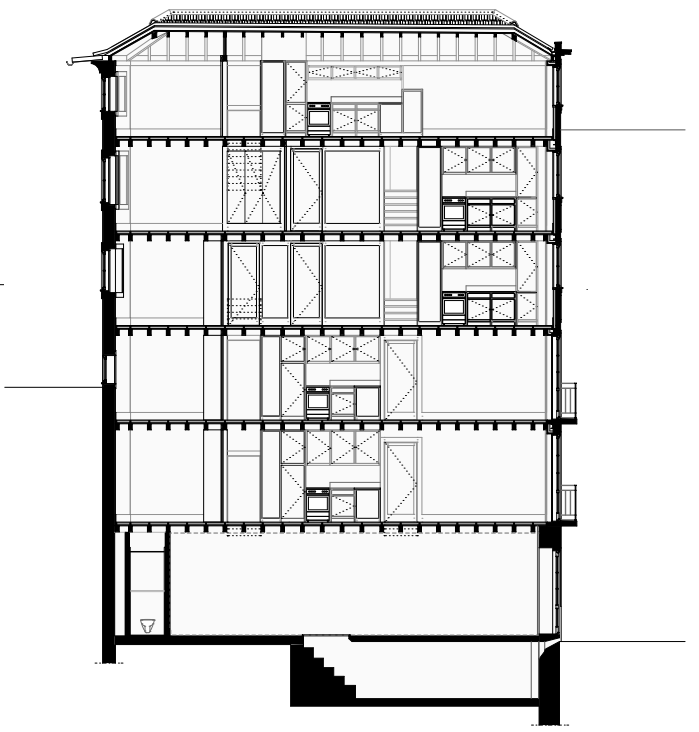
Planta do Piso 1



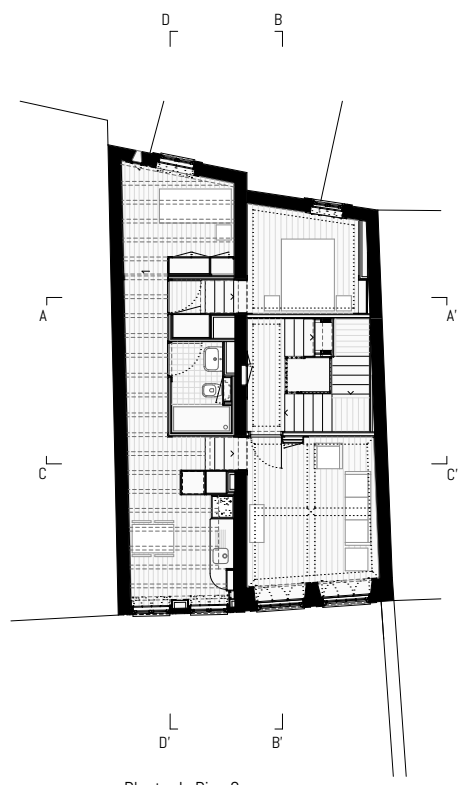
Planta do Piso 2



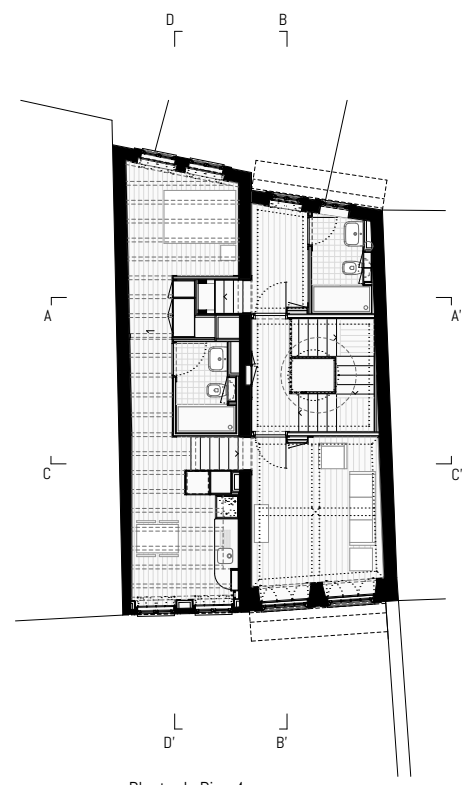
Corte BB'



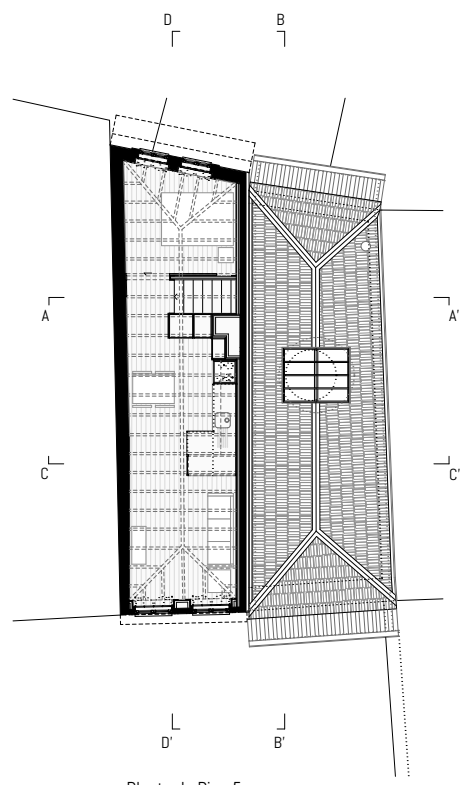
Corte DD'



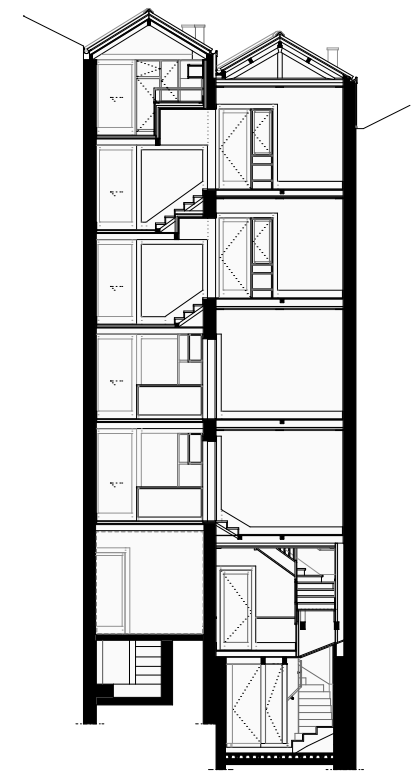
Planta do Piso 3



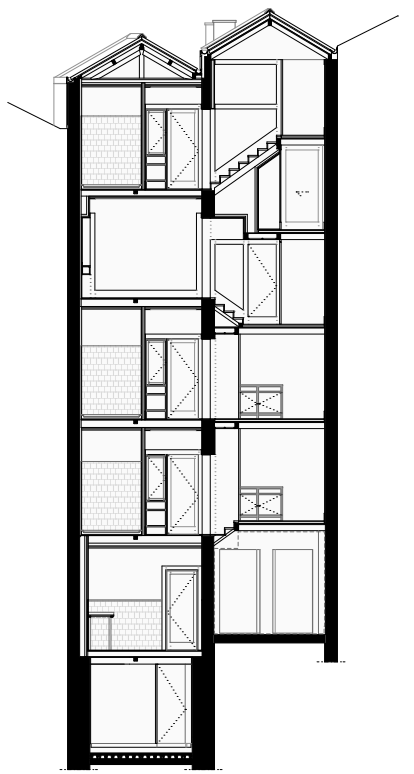
Planta do Piso 4



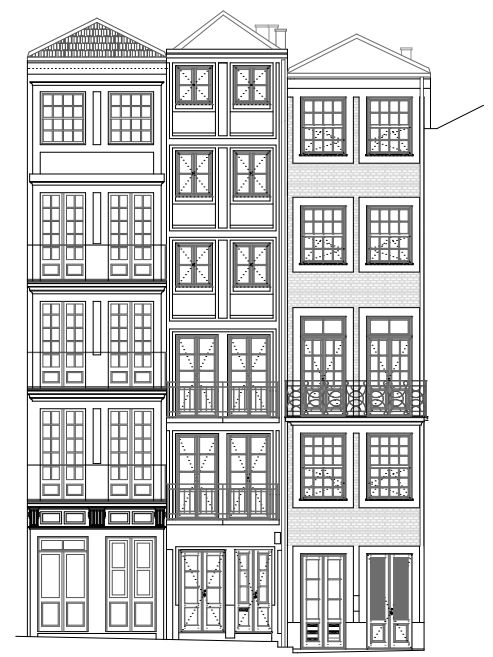
Planta do Piso 5



Corte CC'



Corte AA'



Alçado Frontal









7



8



9

- 6 Vista Interior Quarto
- 7 Vista Interior Cozinha
- 8 Vista Interior Entrada Apartamento
- 9 Vista Interior Entrada Principal
- 10 Vista Interior Escadas

