

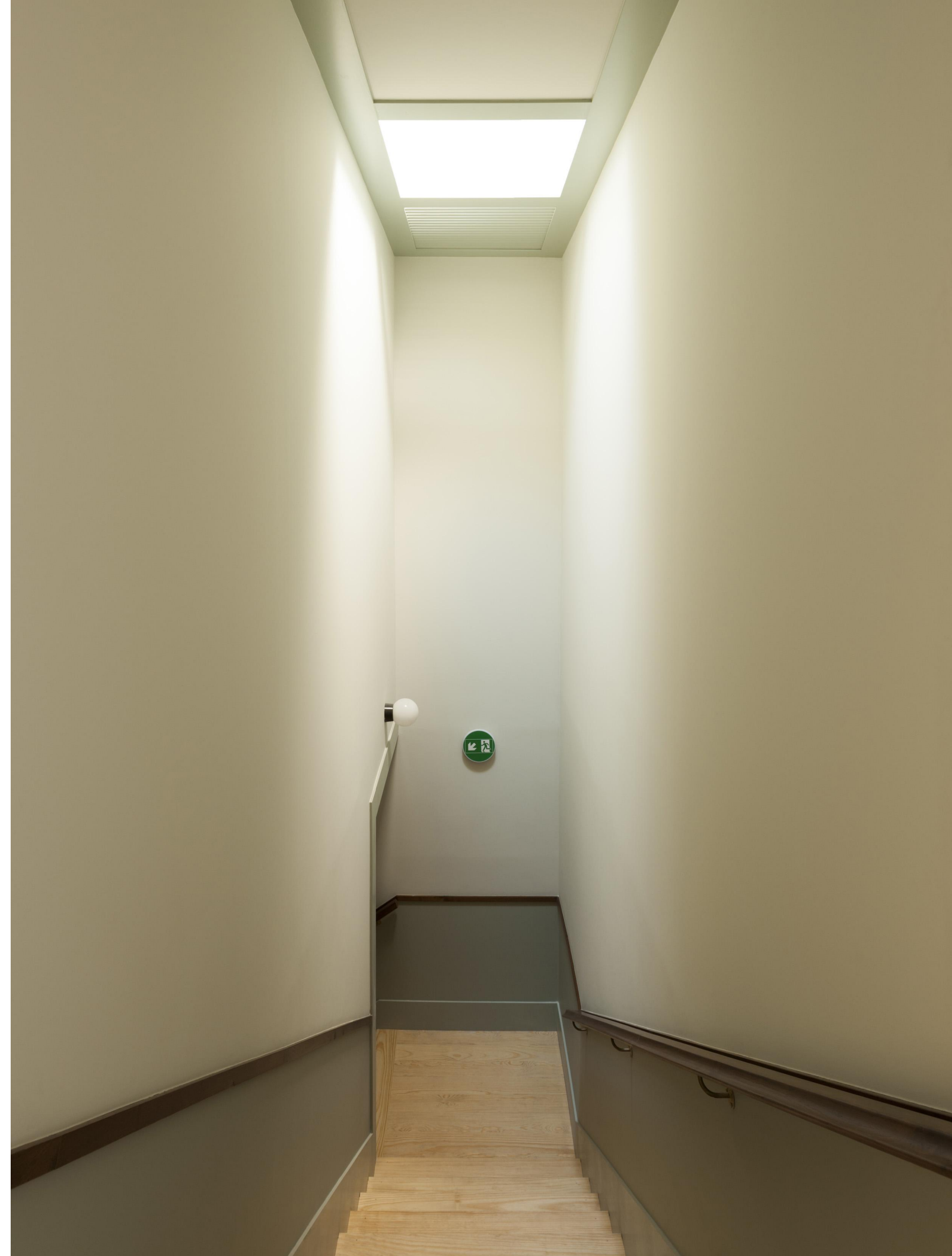
Projecto 2016
Realização 2017 - 2018

Reabilitação de Edifício na Rua da Reboleira nº42

Porto

Arquitectura: André Eduardo Tavares
Colaboração: Arq. Maria Inês Pimentel, Arq. Miguel Trigo
Dono de Obra: DomusSocial, S.A
Localização: Porto
Data de Projecto: 2016
Realização: 2017-2018
Projectos de Especialidades: ASL e Associados
Fotografia: Arménio Teixeira

Todos os Direitos Reservados © André Tavares Arquitecto 2019





1

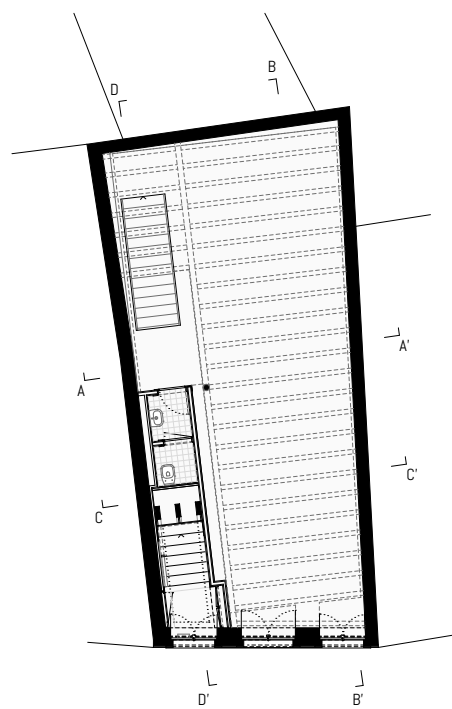


2

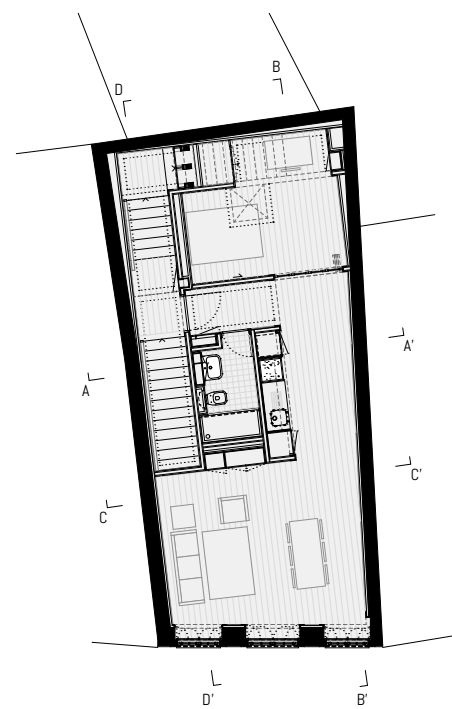


- 1 Implantação
- 2 Vista do Existente
- 3 Vista Exterior
- 4 Vista Exterior

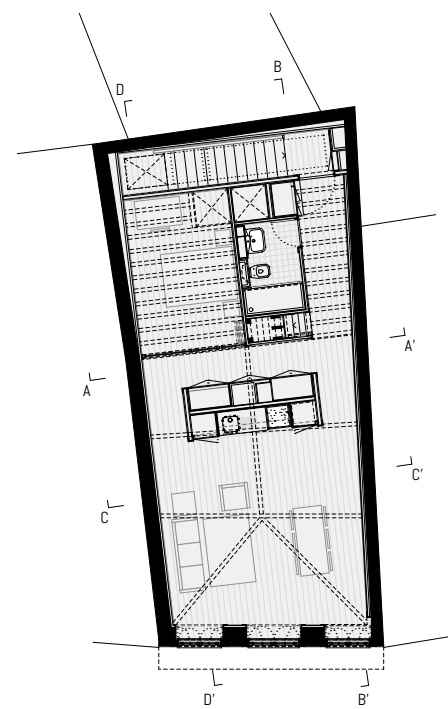




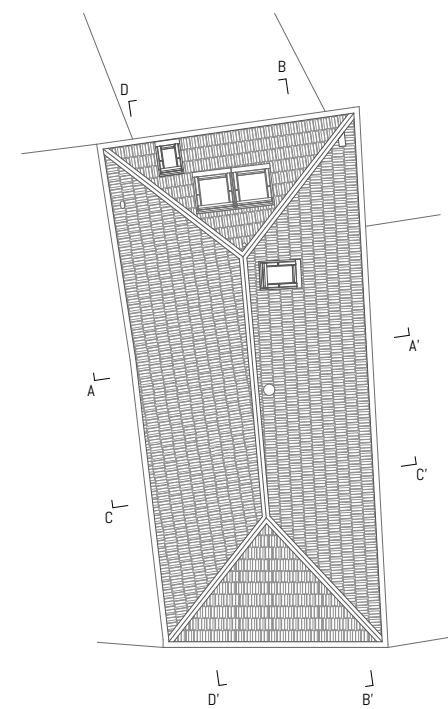
Planta do Piso 0



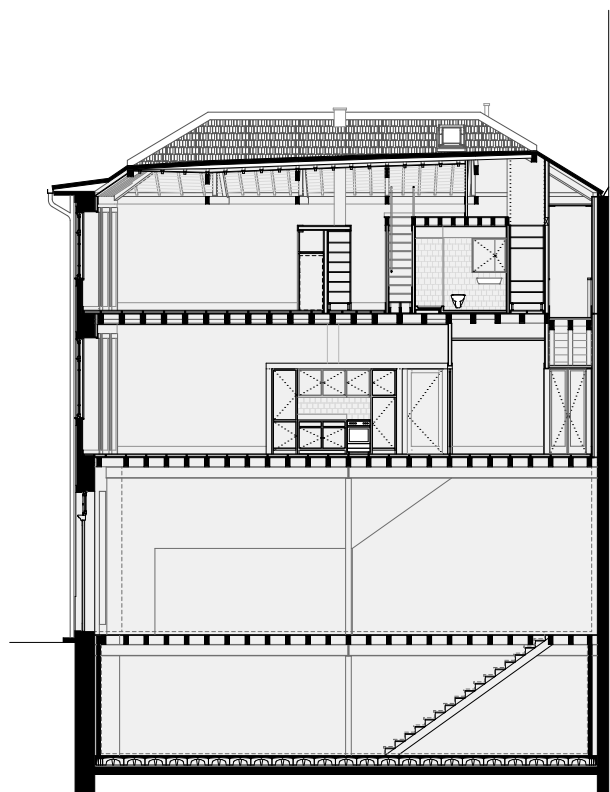
Planta do Piso 1



Planta do Piso 2



Planta de Cobertura



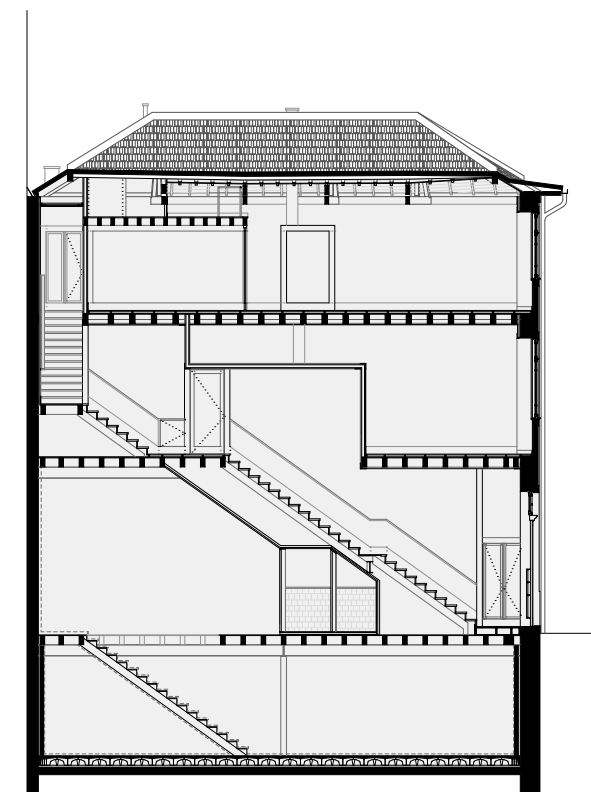
Corte BB'



Corte AA'



Corte CC'



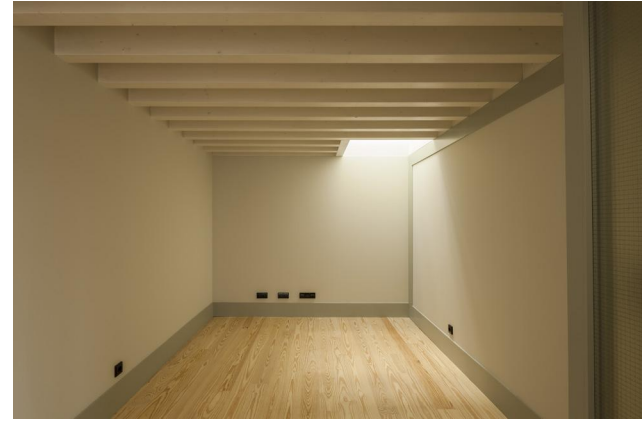
Corte DD'





6

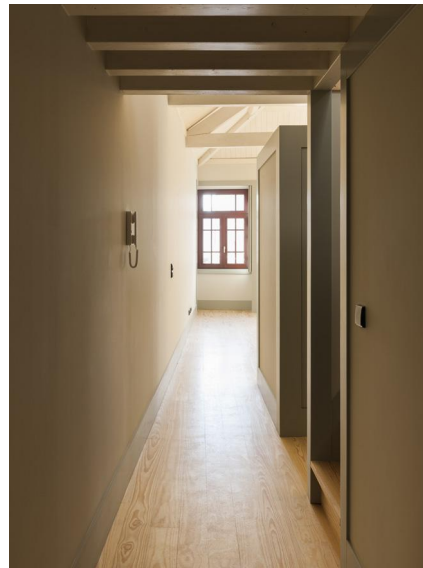
- 5 Vista Interior Sala
- 6 Vista Interior Mezzanine
- 7 Vista Interior Corredor
- 8 Vista Interior Quarto
- 9 Vista Interior Escadas
- 10 Vista Interior Quarto
- 11 Vista Interior Sala
- 12 Vista Interior Sala



10



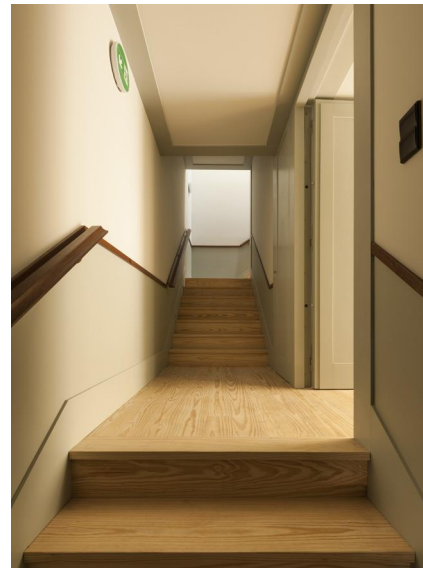
11



7



8



9

